



SUTPHIN
cattle COMPANY

Arkansas

Turn-out Bull Sales

welcome

It is with great pleasure to be able to offer these stout, age advantage coming 2-year-old virgin bulls. Sutphin's are one of the few bull producers that grow & develop their bulls slowly to stout 2 year old for their customers.

We are proud of the offering we have for you, and feel confident that you will be impressed when you view the multi-breed bulls we have here today. The goal of our program is to provide superior genetics to the commercial cowman. We want to provide cattle that work not only for us, but for the cow-calf operator, the feedlot, the packer and the consumer. We are doing this by using proven carcass genetics from across the country and continually stacking low birth weight with high weaning and yearling weights while maintaining grass converting maternal traits. Our plan for Arkansas, Kansas, Georgia, Texas, Oklahoma, New Mexico, Wyoming, Arizona & Florida is to be a source for reliable, high quality, multi-breed bulls for many years to come in the fall & spring.

We have slowly increased our cow herd & expanded our Cooperator Program which has upped our bull numbers to 1,200 per year. We are currently the 7th largest bull supplier in the United States.

We want to build long term relationships and we are extremely grateful for the friends & contacts we have made. We look forward to visiting with you on sale day.

John & Angela Sutphin, III

8825 US Hwy 50

Lamar, CO 81052



*John Sutphin V,
Krew Stegman
& Tilden DuWall*



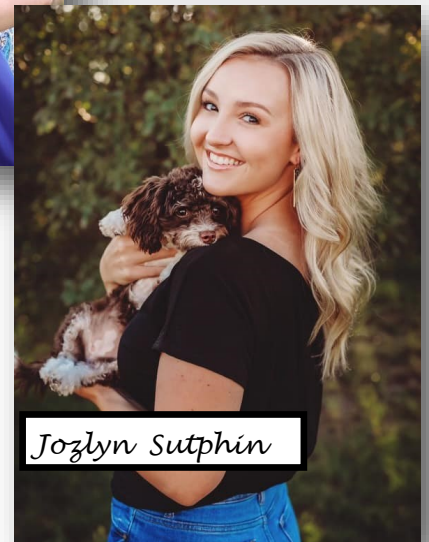
McKenzie & Kolby Stegman



*Jessica, John IV, John,
III, Angela, Annistyn &
Blakelynn*



*Sawyer, Caleb, Slade
& Chanelle DuWall*



Jozlyn Sutphin

WELCOME TO THE SALE

Sale Representatives:

John Sutphin 719-940-3729
 Jim Austin 251-751-9376
 Mark Weddle 501-944-4398
 Fernando Escalera 719-691-8234
 Teddy Linthicum 918-944-6863
 Rocky Vess 501-680-7471
 Randy Goodman, Arkansas Cattle Auction 501-940-0532
 Tanner Ward, Pour Boy Livestock Auction 918-649-4535
 Blake Wilf, Wilf's Cleburne Co. Livestock 501-362-8378
 Shawn Gattis, I-40 Livestock Auction of Ozark 479-667-7693
 Nick Durning, I-40 Livestock Auction of Ozark 479-926-1003

Volume Discounts at sale

4 BULLS = 2%
6 BULLS = 3%
8 BULLS = 4%
10+ BULLS = 5%

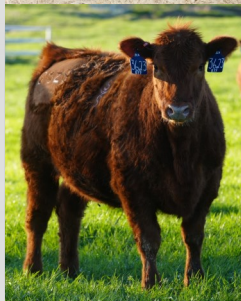
Sale barn is not able to apply the discounts. See John Sutphin after sale.

Bull Selection:

In order to assist you in selecting the bull that is right for your program we have designated a rating for each of our bulls. By rating our bulls, it gives you a better idea of what you are getting. If it's a heifer bull you are looking for, we want to get you a true heifer bull. If you're looking for a cow bull that will put pounds on your herd, we can get you that! When selecting each rating, we take into consideration several factors. We look at the individual bull, the genetics behind him, his EPDs given by the Breed Association, and his actual weights. To the right is an explanation of the ratings along with a docility rating:

Heifer Bulls:

Are marked with **Heifer Bull** or **HB in red** on the lots.



Bull Guarantee:

Bulls over \$4,500 purchase price are "no questions asked" guaranteed for a 120-day (May-Sept) breeding season. **Insurance is paid through Sept 1, 2024.** The replacement covers everything but foot rot (you must doctor your foot rot). John Sutphin must be contacted (719-940-3729) with pictures and or vet verified to qualify for insurance. Bull credit minus salvage value will be granted at next years sale. **For Bull replacement during breeding season: bull will need to be brought to McClave, Colorado Bull Pavilion or Win-rock, AR facility to be switched out.**

Rugged, Range Ready Feed Program:

The bulls are never pushed hard on grain & they are grown on a high roughage diet when on feed test. The yearlings are summered out on grass & then wheat in the fall & spring if available. Our yearlings & weaning weights are real world weights because calves are grown on pasture & high forage diet. *** The Red marks indicate that the data is in the Top 20% of their contemporary group.**

Docility Rating

| | <u>Rating</u> |
|------------------------|---------------|
| Grandma Gentle | 5 |
| Grandpa Gentle | 4.5 |
| Sorts & Works Easily | 4 |
| Manageable | 3.5 |
| Nervous but Manageable | 3 |

Calving Ease

| | <u>Rating</u> |
|--|---------------|
| Guaranteed Heifer Bull Sleep Easy | 5 |
| Heifer Bull meeting most criteria | 4 |
| Moderate BW w/ Moderate EPDs | 3 |
| Heavier BW w/ Growth EPDs | 2 |
| Recommended Cow Bull Only | 1 |

276 Spring Heifers For Sale \$3,000 to \$3,800 delivered and to be Aled May 20th, 2024
 60 Black Angus, 71 Sim Angus, 8 Range Fire, 113 Red Angus. 24 Charolais

58 Fall Bred Heifers Aled to calve in Sept 2024 \$3,600 to \$4,000 delivered
 20 Black Angus, 20 Sim Angus, 18 Charolais/Range Fires

Contact John, Jim, Mark or Teddy to view the females.

RED ANGUS

| Lot | Bull Name | Sire | DOB | Rating | BW | WW | YW | current | WW/DA | WDA |
|--|----------------------------|-----------------------------|-----------|--------|-------|-------|-------|---------|-------|------|
| | % | Sire of Dam | Reg. | CED | Bwepd | Wwepd | Ywepd | Mkep | SCR | DOC |
| 171 | Sutphin's Knight 114 | Axtell Red Knight 8031 | 3/1/2021 | 3.5 | 80 | 503 | 830 | 1530 | 2.35 | 1.39 |
| WR | Cat 3 scurs | Bieber Jericho Z423 | 4707275 | 13 | -2.6 | 57 | 81 | 23 | 38 | 4.5 |
| A true powerhouse! This Axtell Red Knight son is square made, straight across his top & high CED & BW Epds. Very docile. | | | | | | | | | | |
| 201 | Sutphin's Structure 8128 | B/C Structure 8147F | 6/21/2021 | 3 | 80 | 508 | 880 | 1520 | 2.20 | 1.61 |
| WR | 1/8 SM Commercial | Sutphin's Mulberry 009 | Est Epds | 12 | -0.1 | 62 | 95 | 24 | 36 | 4 |
| Stylish bull with eye appeal & an expressive hip. | | | | | | | | | | |
| 203 | Sutphin's Prospector 9503 | Sutphin's Prospector 6285 | 6/6/2021 | 3 | 80 | 503 | 808 | 1360 | 2.41 | 1.41 |
| WR | Cat 3 | Sutphin's Sakic 1309 | 4587937 | 11 | 0.6 | 75 | 108 | 23 | 38 | 4 |
| A moderate framed bull that is thick through his hind quarter & high WW & YW Epds. | | | | | | | | | | |
| 243 | Sutphin's Cinch 8135 | Crump Cinch 9343 | 10/6/2021 | 4 | 75 | 630 | 990 | 1840 | 2.63 | 2.02 |
| | Cat 3 Heifer Bull | Bieber Wallace Z430 | 4795126 | 12 | -2.0 | 66 | 103 | 24 | 42 | 4 |
| A calving ease bull that is powerfully constructed. He can be used on cow and heifers. He is red-marked across the board, a true no holes EPD. | | | | | | | | | | |
| 275 | Sutphin's Knight 9894 | Axtell Red Knight 8051 | 12/3/2021 | 4 | 54 | 530 | 890 | 1470 | 2.51 | 1.80 |
| WR | Cat 3 | Sutphin's Wallace | 4737249 | 16 | -4.4 | 47 | 61 | 21 | 35 | 4 |
| A long bodied Red Knight son with a big hip. | | | | | | | | | | |
| 306 | Sutphin's Knight 1 | Axtell Red Knight 8051 | 9/2/2022 | 4 | 78 | 540 | 962 | 1450 | 2.40 | 2.50 |
| | Cat 3 Heifer Bull | Mr. Sutphin DS | 4910566 | 14 | -2.1 | 55 | 90 | 25 | 41 | 4 |
| An Axtell Red Knight son with high Milk Epd & large scrotal. Keep his females. | | | | | | | | | | |
| 307 | Sutphin's Out N Front 7604 | Sutphin's Out in Front 3188 | 9/23/2022 | 3.5 | 81 | 520 | 897 | 1260 | 2.25 | 2.37 |
| | Cat 3 | Andras Fusion R236 | 4746499 | 10 | 0.1 | 60 | 102 | 15 | 37 | 3.5 |
| A moderate framed Out N Front son with an expressive hindquarter & high YW Epd. | | | | | | | | | | |
| 310 | Sutphin's Santana 8079 | Nio Santana 8019 | 9/25/2022 | 4 | 62 | 525 | 962 | 1280 | 2.45 | 2.57 |
| WR | Cat 2 Heifer Bull | Counterpoint 4513 | 4737041 | 14 | -2.9 | 50 | 76 | 20 | 38 | 3.5 |
| A Nio Santana son with an athletic build & high growth. | | | | | | | | | | |



Calvo Red Knight 86A Sire of Axtell Red Knight 8051

A moderate framed bull with loads of muscle & a Heifer Bull Deluxe producer.

CED 16 BW -5.1 WW 60 YW 91 M 26

Pie Cinch 4126 sire of Crump Cinch 9343 (4099486)

He produces stout & powerful sons. His progeny are deep bodied with added muscle shape & dimension.

CED 14 BW -2.4 WW 75 YW 122 M 30

RED ANGUS

| Lot | Bull Name | Sire | DOB | Rating | BW | WW | YW | current | WW/DA | WDA |
|---|-------------------------------|-----------------------------|------------|--------|-------|-------|-------|---------|-------|------|
| | % | Sire of Dam | Reg. | CED | Bwepd | Wwepd | Ywepd | Mkep | SCR | DOC |
| 316 | Sutphin's Expedition 8072 | Webr Expedition 442 | 9/14/2022 | 5 | 53 | 550 | 947 | 1250 | 2.45 | 2.46 |
| | Cat 3 Heifer Bull | MSN Con II 6023 | 4737039 | 16 | -4.0 | 43 | 60 | 21 | 36 | 3 |
| An Expedition son with high growth & Heifer Bull Deluxe. | | | | | | | | | | |
| 318 | Sutphin's Prospector 9476 | Sutphin's Prospector 6285 | 4/9/2022 | 3.5 | 82 | 500 | 800 | 1280 | 1.59 | 1.73 |
| | Cat 3 | Sutphin's Deniro 108Z | 4902606 | 15 | -2.5 | 73 | 109 | 22 | 30 | 4 |
| 330 | Sutphin's Oly 254 | Sutphin's Oly 297z | 9/11/2022 | 3 | 83 | 650 | 980 | 1530 | 2.60 | 2.61 |
| | Cat 3 | Mushrush Impressive LN U217 | 4736879 | 11 | -0.3 | 63 | 104 | 22 | 39 | 3 |
| One of the top bulls in the 2022 production. High WW & YW Epd. | | | | | | | | | | |
| 333 | Sutphin's 323 | Pending Hair Sample | 12/26/2022 | 4 | 72 | 582 | 980 | 1190 | 2.95 | 2.92 |
| | Cat 1A Heifer Bull | Bieber Roosevelt W384 | 4736895 | 13 | -1.7 | 56 | 80 | 18 | 38 | 4 |
| 336 | Sutphin's Knight 9891 | Axtell Red Knight 8051 | 10/1/2022 | 5 | 50 | 509 | 816 | 1380 | 2.20 | 2.64 |
| | Cat 3 white sheath HBD | Sutphin's Wallace 418 | 4737137 | 17 | -5.1 | 46 | 63 | 20 | 35 | 4 |
| A deep, soggy, cow maker. Keep all his daughters & build a maternal foundation in you herd. | | | | | | | | | | |
| 338 | Sutphin's Oly 8405 | Sutphin's Oly 297Z | 6/5/2022 | 3 | 82 | 505 | 907 | 1440 | 2.37 | 2.35 |
| | Cat 3 | Mr. Sutphin MR | 4910570 | 11 | -1.9 | 50 | 91 | 24 | 37 | 3 |
| Out of the deeper, heavier muscled bulls in the offering. High Milk Epd. | | | | | | | | | | |



Hamley sire of TC 3 Aces Hamley 2605 (3491394)
 Phenotypically flawless, Hamley will add pounds & muscle dimension in a sound & attractive package.
CED 15 BW -1.3 WW 49 YW 69 M 23

5L Out In Front 1701-457B Sire of
5L Out in Front 5084-60D (3565084)
CED 8 BW -2.0 WW 67 YW 100 M 18



Leachman Deniro A090x (1371233)
 Sire to Sutphin Deniro 196W & 108z
 Expressive muscle, deep rib & proven heifer maker.
CED 18 BW -5.1 WW 52 YW 80 M 29

RED ANGUS SIRES



Sire of Mushrush Impressive LN U217 (1295151)

One of the top bulls of the 2010 Mushrush Sale.

He is a calving ease deluxe bull.

CED 16 BW -2.9 WW 69 YW 115 M 16



Red Six Mile Sakic 832S (1160318)

Widely recognized for siring beautiful phenotype & outstanding daughters.

CED 9 BW -0.3 WW 63 YW 90 M 8

ANGUS

| Lot | Bull Name | Sire | DOB | Rating | BW | WW | YW | current | WW/DA | WDA |
|------------|----------------------------------|-------------------------|-----------|--------|-------|-------|-------|---------|-------|------|
| | % | Sire of Dam or Dam Reg. | Reg. | CED | Bwepd | Wwepd | Ywepd | Mkep | SCR | DOC |
| 400 | Sutphin's Thunder 7008 | B/C Thunderstruck 7450 | 4/15/2023 | 3.5 | 77 | 620 | 907 | 950 | 3.00 | 2.48 |
| | Reg Pending LBW | Penz North America 2122 | Est Epds | 3 | 2.8 | 45 | 80 | 25 | 37.5 | 4 |
| 402 | Sutphin's Resource nt | KLA Resource 9212 | 4/1/2023 | 3 | 80 | 560 | 1021 | 1130 | 2.50 | 2.85 |
| | | SAV Final Answer 0035 | Est Epds | 5 | 2.3 | 59 | 103 | 24 | 36 | 4 |
| 403 | Sutphin's Brilliance 9583 | B/C Brilliance 6042 | 4/5/2023 | 4 | 75 | 523 | 1006 | 1030 | 2.31 | 2.62 |
| | 12% LM 88% AN Heifer Bull | Sutphin's Big Time 917 | Est Epds | 9.5 | 0.1 | 50 | 87 | 21 | 33.5 | 4 |
| 404 | Sutphin's Resource 8516 | KLA Resource 9212 | 2/14/2023 | 3 | 85 | 580 | 947 | 1090 | 2.58 | 2.46 |
| | | Schurrtop 801 L494 | Est Epds | 6 | 1 | 50 | 92 | 19 | 34 | 4 |
| 406 | Sutphin's Resource 8545 | KLA Resource 9212 | 3/29/2023 | 3 | 85 | 529 | 980 | 1020 | 2.34 | 2.55 |
| | | KLA Palladium 398 | Este Epds | 4 | 2.3 | 56 | 101 | 21 | 36.5 | 4 |
| 407 | Sutphin's Impact 9078 | Schurr 77 4112 9297 | 4/17/2023 | 4 | 75 | 675 | 1020 | 1120 | 3.05 | 2.94 |
| | Heifer Bull | CF Endurance 704 | Est Epds | 6 | 1.3 | 48 | 94 | 25 | 39 | 4 |
| 408 | Sutphin's Resilient 3997 | Penz Resilient 7298 | 3/29/2023 | 3 | 78 | 603 | 1001 | 1150 | 2.70 | 2.88 |
| | LBW | K & B Stout Rio 610 | Est Epds | 5 | 2.2 | 52 | 95 | 24 | 37 | 4 |
| 410 | Sutphin's Mountaineer 0417 | Sitz Mountaineer | 4/15/2023 | 3 | 80 | 620 | 1110 | 1170 | 2.87 | 3.05 |
| | | 4 Schurr 049 A403 | 20657931 | 5 | 2.6 | 67 | 113 | 31 | 34 | 4 |

ANGUS

| Lot | Bull Name | Sire | DOB | Rating | BW | WW | YW | current | WW/DA | WDA |
|---|--------------------------|----------------------------|-----------|--------|-------|-------|-------|---------|-------|------|
| | % | Sire of Dam or Dam Reg. | Reg. | CED | Bwepd | Wwepd | Ywepd | Mkep | SCR | DOC |
| 411 | Sutphin's Resource 8500 | KLA Resource 9212 | 5/16/2023 | 3.5 | 82 | 576 | 1000 | 1120 | 2.57 | 3.18 |
| | | Schurrtop 801 L494 | Est Epds | 5 | 1.9 | 53 | 94 | 23 | 32 | 4 |
| 412 | Sutphin's Impact 9025 | Schurr 77 4112 9297 | 3/26/2023 | 4 | 75 | 548 | 930 | 970 | 2.43 | 2.41 |
| | Heifer Bull | Penz Lookout 6544 | Est Epds | 8 | 0 | 50 | 94 | 23 | 34 | 4 |
| 661 | Sutphin's Acres 9079 | Sutphin's Angus Acres 8516 | 9/26/2022 | 5 | 54 | 584 | 970 | 1150 | 2.67 | 2.39 |
| WR | Heifer Bull Deluxe | Penz Slingshot 7021 | 20870792 | 9 | -1.7 | 52 | 78 | 24 | 37 | 3.5 |
| Acres has become our go-to for a calving ease, low BW with all the right numbers. An impressive bull all around. Retaining 1/2 semen Int. | | | | | | | | | | |
| 665 | Sutphin's Red River 6022 | KLA Red River 064 | 9/10/2022 | 5 | 65 | 686 | 962 | 1440 | 2.93 | 2.58 |
| WR | Heifer Bull Deluxe | Schurrtop E626 J993 | 20916379 | 11 | -0.5 | 54 | 102 | 30 | 38 | 4 |
| 672 | Sutphin's Red River 0169 | KLA Red River 064 | 8/22/2022 | 5 | 62 | 531 | 901 | 1400 | 2.35 | 2.65 |
| WR | Heifer Bull Deluxe | B/C Brilliance 6042 | 20871199 | 12 | -0.5 | 50 | 95 | 28 | 38 | 4 |
| A KLA Red River son with a longer skeleton & high Milk Epds. Retaining 1/2 semen Int. | | | | | | | | | | |
| 673 | Sutphin's Red River 3994 | KLA Red River 064 | 9/20/2022 | 5 | 60 | 530 | 980 | 1390 | 2.89 | 2.61 |
| WR | Heifer Bull Deluxe | K & B Stout Rito 610 | 20871198 | 11 | -2.1 | 49 | 92 | 30 | 38 | 5 |
| Another KLA Red River son that has outstanding Milk Epd, excellent growth numbers & a 5 star calving ease rating. Retaining 1/2 semen Int. | | | | | | | | | | |
| 675 | Sutphin's Instinct 0461 | KLA Instinct 9125 | 9/23/2022 | 4 | 71 | 537 | 915 | 1360 | 2.38 | 2.37 |
| WR | Comm 18%LM 82%AN HB | Penz Resource 7288 | Est Epds | 7 | 0 | 48 | 77 | 24 | 37 | 4 |
| An Instinct son with high Milk Epd & low actual BW. | | | | | | | | | | |
| 684 | Sutphin's Rush Lake 828 | B/C Rush Lake 8098 | 9/16/2022 | 3 | 81 | 570 | 909 | 1330 | 2.55 | 2.60 |
| WR | Reg Pending | Schurrtop LK Beyond 7656 | Est Epds | 2 | 2.4 | 40 | 67 | 18 | 36 | 4 |
| 686 | Sutphin's Rush Lake 842 | B/C Rush Lake 8098 | 9/21/2022 | 3 | 80 | 610 | 950 | 1410 | 2.62 | 2.32 |
| WR | Reg Pending | Schurrtop LK Beyond 7656 | Est Epds | 3 | 3.3 | 38 | 68 | 18 | 35 | 4 |
| A Rush Lake son with high growth & loads of style. Broke nose in chute by accident, will guaranty bull until 2025. | | | | | | | | | | |



Sire of B/C Thunderstruck 7174E (3367336)
 Thunderstruck is unique in the combination of his thickness & muscle share in a smooth package.
CED 11 BW 2.2 WW 66 YW 101 M 21

SAV Resource 1441 sire of
Penz Resilient 7298 (17016597)
 Makes great females and has wrote is own page in Angus history.
CED 2 BW 4.0 WW 69 YW 132 M 17

LIM ANGUS

| Lot | Bull Name | Sire | DOB | Rating | BW | WW | YW | current | WW/DA | WDA |
|--|--------------------------|-------------------------|------------|--------|-------|-------|-------|---------|-------|------|
| | % | Sire of Dam or Dam Reg. | Reg. | CED | Bwepd | Wwepd | Ywepd | Mkepd | SCR | DOC |
| 838 | Sutphin's Bismark 0162 | Sutphin's Bismark 2102 | 4/19/2022 | 4 | 76 | 560 | 957 | 1630 | 2.80 | 2.37 |
| WR | 6% LM Commercial HB | B/C Rush Lake 8098 | Est Epds | 10 | -0.2 | 52 | 85 | 21 | 40 | 4 |
| A Bismark son that is a stand out in the pen with high % Angus, deep body & high growth Epds. Keep his females. | | | | | | | | | | |
| 850 | Sutphin's Acres 0171 | KLA Angus Acres 8185 | 8/24/2022 | 5 | 59 | 590 | 1020 | 1450 | 2.54 | 2.65 |
| WR | 9% LM Heifer Bull Deluxe | B/C Charlo 6035 | Est Epds | 12 | -0.8 | 60 | 97 | 25 | 38 | 4 |
| A bull with structural integrity. He is a smaller framed, wider based bull with growth numbers. Sleep Easy. Retaining 1/2 semen Int. | | | | | | | | | | |
| 852 | Sutphin's Resource 5781 | Penz Resource 7288 | 10/13/2022 | 3.5 | 69 | 605 | 981 | 1420 | 2.54 | 2.70 |
| WR 8K | 37% LM | Wulfs You First Y369Y | Est Epds | 7 | 2.2 | 53 | 87 | 25 | 37 | 4 |
| A lighter BW Resource son that is impressive in the pen with his added muscle & stretch. Retaining 1/2 semen Int. | | | | | | | | | | |
| 857 | Sutphin's Charlo 0185 | B/C Charlo 8188 | 11/23/2022 | 4 | 75 | 568 | 960 | 1150 | 2.51 | 2.21 |
| | 9% LM Heifer Bull | B/C Brilliance 6042 | Est Epds | 6 | 1 | 46 | 78 | 24 | 36 | 4 |



Sutphin's Rito 703 8147 (AAA-17814183)
 The highlight bloodline of Sutphin Sales for years.
CED 3 BW 2.9 WW 36 YW 65 M 18



**SAV Harvester 0338 grandsire of
 KLA Instinct 9145 (AAA-16879074)**
 Harvester is a \$275,000 true breed changer and
 performance powerhouse.
CED -3 BW 5.7 WW 77 YW 130 M 40

Lim Angus Bulls

Sutphin's Lim Angus herd was started in 1983, with all red and horned Limousin cattle from France.

Since 1996 Angus sires have been used on Sutphin's Lim herd, making them black & polled.

The last 40 years, John has worked hard on disposition and mothering ability and has made a functional cow for our area that is 3/4 to 7/8 Angus and 1/4 to 1/8 Limousin. With this combination the Lim Angus bulls pack a punch and will enhance a black Angus herd with hybrid vigor, added muscle and yield.

It's a proven fact Limousin adds a larger ribeye and extra red meat to the carcass.

ANGUS SIRES



Baldrige Command C036 (1821991)
An ABS proven AI Bull. Transmits a great combination of power, performance & phenotype. Impeccable calving ease & maternal tabulation.
In Command and In Demand
CED 9 BW 0.1 WW 64 YW 118 M 29



**SAV Angus Acres 3205 sire of
KLA Angus Acres 8185 & Penz Angus Acres 6571**
Acres is proving up to be a light BW type sire with tremendous growth & eye appeal.
CED 2 BW 2.4 WW 49 YW 90 M 22



**SAV Raindance sire of
KLA Red River 064 (AAA-19716589)**
Extra long, deep-bodied & stout-rumped with all the power & performance put in one package.
CED 15 BW -0.7 WW 57 YW 113 M 32



**Coleman Charlo 0256 (AAA-16879074)
sire to KLA Bravo 9169**
Charlo is the cattleman's kind & a breed changer. He is super heavy muscled & a capacity machine. Lot 526, 788
CED 9 BW 0 WW 50 YW 91 M 25

ANGUS SIRES



SAV President 6847 (18578964)

Was the world record and top-selling bull of the 2017 SAV sale. Valuation of \$938,500. Son of Coleman Charlo 0256.

CED 3 BW 3.4 WW 73 YW 122 M 23



SAV Platinum 0010 (AAA-16687592)

Sire to KLA Palladium 398

Platinum is a long-bodied, deep-ribbed bull. He is a curve bending sire that offers calving ease with exceptional growth & maternal traits. Lot 446,

CED 8 BW 0.6 WW 69 YW 118 M 21



Sutphin's Rito 703 8147 (AAA-17814183)

The highlight bloodline of Sutphin Sales for years.

CED 3 BW 2.9 WW 36 YW 65 M 18



SAV Final Answer 0035 (AAA-13592905)

Final Answer has proven himself for several decades for light BW & making phenomenal females.

CED 13 BW -1.2 WW 56 YW 94 M 22



KLA Combine 450 sire of

KLA Combine 7206 (18849598)

This deep bodied sire will add depth of rib & guts to all his calves.

CED 1 BW 3.6 WW 61 YW 96 M 19

CHAROLAIS

| Lot | Bull Name | Sire | DOB | Rating | BW | WW | YW | current | WW/DA | WDA |
|---|------------------------------|-----------------------------|------------|--------|-------|-------|-------|---------|-------|------|
| | % | Sire of Dam or Dam Reg. | Reg. | CED | Bwepd | Wwepd | Ywepd | Mkep | SCR | DOC |
| 914 | Sutphin's Ledger 854 | Southern 1649F ET | 5/1/2022 | 3 | 93 | 524 | 920 | 1530 | 2.24 | 2.22 |
| | de-horned | Sutphin's Schurr 117 | MP5620 | 3 | 0.9 | 54 | 108 | 20 | 40 | 3 |
| A Ledger son with extra size & performance. High YW & Milk Epd. He will add bone & pounds to your calf crop. | | | | | | | | | | |
| 916 | Sutphin's Bk Crown 797 | Sutphin's Blk Crown 4247 | 4/24/2022 | 2 | 92 | 540 | 910 | 1880 | 2.35 | 2.79 |
| | 31/32 | SCF Ledger | M993130 | 9.8 | -0.4 | 45 | 85 | 19 | 41 | 4 |
| An absolute stud with a huge hip, deep middle & wide top. He is a herd bull in the making. | | | | | | | | | | |
| 919 | Sutphin's Eaton's Choice 895 | Schurrtop K717 P143 P | 5/24/2022 | 2.5 | 90 | 504 | 873 | 1440 | 2.39 | 2.64 |
| | 31/32 | DCF Gold Ledger 514C P ET | M995662 | 12.6 | -1.1 | 60 | 109 | 13 | 38 | 4 |
| A stacked pedigree with Schurrtop & Gold Ledger. He has a gentle disposition with a high YW Epd. | | | | | | | | | | |
| 923 | Sutphin's Eaton's Choice 996 | Schurrtop K717 P143 P | 4/23/2022 | 3 | 96 | 550 | 889 | 1540 | 2.26 | 2.50 |
| WR | 30/32 | DCF Gold Ledger 514C P ET | RM102976 | 8.5 | 1.3 | 67 | 116 | 14 | 37 | 4 |
| A moderate famed Eaton's Choice son with an expressive hip & a wide base. Good growth Epds. Muscle to burn. | | | | | | | | | | |
| 930 | Sutphin's Ledger 952 | Southern 1649F ET | 4/18/2022 | 2.5 | 89 | 568 | 936 | 2010 | 2.43 | 2.96 |
| WR | 32/32 horned | Sandcrek Blueprint 114 | M995663 | 8.2 | 0.3 | 60 | 109 | 20 | 38 | 4 |
| A deeper ribbed, Ledger son with a wide top & hindquarter. He will add pounds to his calves. High growth numbers. | | | | | | | | | | |
| 931 | Sutphin's Eastons Choice 882 | Schurrtop K717 P143 P | 5/7/2022 | 2.5 | 96 | 528 | 905 | 1600 | 2.43 | 2.55 |
| | 32/32 scurs | Sandcrek Blueprint 114 | p1399261 | 7.8 | 0.6 | 57 | 107 | 13 | 42 | 3 |
| Take advantage of the extra BW & size, it will show up in his feeder calves that grow, gain & top the market. Huge scrotal. | | | | | | | | | | |
| 951 | Sutphin's Ledger 877 | Southern 1649F ET | 11/15/2022 | 3.5 | 83 | 588 | 962 | 1300 | 2.91 | 2.41 |
| | 28/32 | 007 Black Crown 1335 | RM103007 | 10 | -0.2 | 55 | 101 | 19 | 38 | 4 |
| A Ledger son that is easy on the eye. He is powerfully constructed in a moderate frame. Huge hip muscle & moderate BW. | | | | | | | | | | |
| 955 | Sutphin's Choice 950 | Schurrtop Eaton Choice K717 | 11/1/2022 | 4 | 72 | 544 | 952 | 1300 | 2.52 | 2.47 |
| | Range Fire LBW | SCF Ledger | M995901 | 12 | -1.2 | 55 | 101 | 16 | 37 | 4 |
| A Range Fire bull that is moderate framed, deep, stout & high growth with low actual BW. | | | | | | | | | | |
| 966 | Sutphin's Choice 949 | Schurrtop K717 P143P | 11/20/2022 | 4 | 73 | 509 | 937 | 1450 | 2.43 | 3.07 |
| WR | 32/32 Horn/scurs LBW | Sandcrek Blueprint 114 | M995167 | 10.1 | -0.7 | 56 | 109 | 17 | 38 | 4 |
| This Schurrtop son has growth & power. His calves will weight more & pay more. | | | | | | | | | | |
| 970 | Sutphin's Blk Crown 4146 | Sutphin's Blk Crown 4247 | 10/17/2022 | 3.5 | 83 | 679 | 1017 | 1340 | 3.28 | 2.65 |
| WR | 32/32 Scurs | Schurrtop M2580 6287 P | M995169 | 12.3 | -1.6 | 57 | 97 | 19 | 38 | 4 |
| A Black Crown son that will add frame to you calves. He is a powerhouse with tons of growth. | | | | | | | | | | |
| 977 | Sutphin's Ledger 860 | Southern 1649F ET | 8/30/2022 | 3 | 80 | 560 | 893 | 1425 | 2.49 | 2.31 |
| WR | 32/32 | Sandcrek Blueprint 114 | M995170 | 3.5 | 2.2 | 54 | 105 | 19 | 43 | 4 |
| A Ledger son with high growth & a stand-out in the pen. | | | | | | | | | | |
| 982 | Sutphin's Blk Crown 358 | Sutphin's Blk Crown 4247 | 9/28/2022 | 4 | 70 | 502 | 853 | 1300 | 2.13 | 2.20 |
| | 32/32 | Schurrtop JK C039 4535 P | M997119 | 13.4 | -1.9 | 46 | 85 | 15 | 36 | 4 |

HERD SIRES



Lock N Load 243P (M836295)

His outstanding numbers will impress. He ranks top in several Epsd rankings.

CED 7.6 BW 0.4 WW 75 YW 141 M 21



Lt Ledger 0332 P (M791626)

Ledger is being widely used across the country.

CED 7.5 BW -0.9 WW 33 YW 71 M 3



Sire of B/C Thunderstruck 7174E (3367336)

Thunderstruck is unique in the combination of his thickness & muscle share in a smooth package.

CED 11 BW 2.2 WW 66 YW 101 M 21



Grandsire of PHFC Copacetic 0400H (3903357)

Quantum Leap is one of the exciting purebred bulls with calving ease combined with eye appeal & body dept.

CED 12 BW 2 WW 89 YW 125 M 19

Sim Angus Bulls

Sutphin Cattle has built a Sim Angus bull, approx. 3/8 to 1/4 blood, that calves moderate & is not too big for our country.

These bulls will influence a Black Angus herds weaning weight by 40 lbs plus. These bulls have a wide top, huge hindquarter & the calves will push the scales down at weaning time and will top the market.

SIM ANGUS

| Lot | Bull Name | Sire | DOB | Rating | BW | WW | YW | current | WW/DA | WDA |
|----------------------------|---------------------------------|------------------------------|------------|--------|-------|-------|-------|---------|-------|------|
| | % | Sire of Dam or Dam Reg. | Reg. | CED | Bwepd | Wwepd | Ywepd | Mkepd | SCR | DOC |
| 1165 | Sutphin's Thunder 402 | Thunderstruck 7174-3367336 | 4/8/2023 | 3.5 | 83 | 650 | 1030 | 1090 | 2.94 | 2.79 |
| | 1/4 SM 3/4 AN | MR Sutphin Emick | 4355196 | 12 | -0.8 | 61 | 97 | 22 | 39 | 3.5 |
| 1166 | Sutphin's Bold 021 | Mr. Ishee Bold Man | 1/18/2023 | 2 | 98 | 515 | 874 | 1060 | 2.26 | 2.26 |
| | 1/2 SM 1/4 AN 1/4 LM | MR Malone | 4355198 | 10 | 1.9 | 71 | 106 | 22 | 42 | 3.5 |
| 1167 | Sutphin's Thunder 3 | Thunderstruck 7174-3367336 | 2/20/2023 | 3 | 90 | 610 | 1008 | 1240 | 2.75 | 2.84 |
| | 1/4 SM 3/4 AN | MR Malone GS | 4355200 | 11 | 0.5 | 64 | 101 | 21 | 37 | 3.5 |
| 1168 | Sutphin's Copa 729 | PHFC Copacetic 0400H-3903357 | 11/26/2022 | 2 | 98 | 568 | 1050 | 1210 | 2.53 | 2.31 |
| | 3/8 SM 3/8 AN 1/4 LM | Mr. Sutphin Malone E | 4355202 | 11.6 | 1.8 | 69 | 105 | 16 | 34 | 3.5 |
| 1172 | Sutphin's Bold 402a | Mr. Ishee Bold Man | 1/20/2023 | 3 | 89 | 523 | 955 | 1160 | 2.31 | 2.48 |
| | 1/2 SM 1/4 AN 1/4 LM | Mr. Sutphin Malone | 4355204 | 11.7 | 0.2 | 67 | 100 | 24 | 35 | 3.5 |
| 1174 | Sutphin's Thunder 342 | Thunderstruck 7174-3367336 | 1/17/2023 | 3.5 | 83 | 508 | 933 | 1140 | 2.19 | 2.42 |
| | 1/4 SM 1/2 AN 1/4 LM | Mr. Sutphin Malone | 4355206 | 12 | -0.8 | 61 | 97 | 22 | 36 | 3.5 |
| 1175 | Sutphin's Net Return 253 | MFSM Net Return 9553G | 3/27/2023 | 2 | 95 | 578 | 1100 | 1200 | 2.58 | 2.99 |
| | 1/4 SM 1/2 AR 1/4 AN | MR Mushrush Red Angus | 4355208 | 10 | 0.4 | 57 | 89 | 20 | 37 | 3.5 |
| 1176 | Sutphin's Field Hand 6229 | Penz Field Hand 9602 | 3/27/2023 | 3 | 83 | 621 | 1000 | 1070 | 2.79 | 2.66 |
| | 1/8 LM 7/8 AN | Mr. Sutphin's Objective | Est Epds | 1 | 3.5 | 70 | 100 | 23 | 35 | 3.5 |
| sire epds -3 4.8 74 131 23 | | | | | | | | | | |
| 1177 | Sutphin's Bismark 9630 | Sutphin's Bismark 2102 | 4/1/2023 | 3 | 85 | 720 | 1007 | 1170 | 3.28 | 2.95 |
| | 1/8 SM 7/8 AN | B/C Blair Badger 5023 | Est Epds | 8.3 | 0.6 | 62 | 104 | 24 | 31 | 3.5 |
| 1178 | Sutphin's Bismark 1330 | Sutphin Bismark 3994 | 4/5/2023 | 4 | 68 | 590 | 1070 | 1130 | 2.68 | 2.88 |
| | 1/8 SM 3/4 AN 1/8 LM LBW | B/C Thunderstruck 7174E | Est Epds | 10 | 0.9 | 55 | 88 | 22 | 32 | 3.5 |
| 1179 | Sutphin's Net Return 1 | MFSM Net Return 9553G | 4/6/2023 | 2 | 98 | 603 | 910 | 940 | 2.70 | 2.40 |
| | 1/4 SM 1/2 AR 1/4 AN | MR Mushrush Red Angus | 4355210 | 9.4 | 1 | 62 | 96 | 20 | 35 | 3.5 |



NF Net Return 8197 sire of
NFSM Net Return 9553G (3897182)
 Net Return is a growth bull that is well rounded
CED 10.7 BW -0.2 WW 58 YW 92 M 20

SUTPHIN FAMILY



Thanksgiving 2023

SUTPHIN CATTLE CREW



Jim & Leslie Austin



Mark Weddle



Ken Ward & Family



Fernando Escalera & Family



Jade Wedman & Family



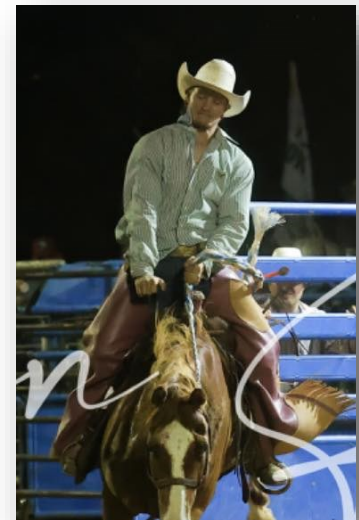
Abraham Hernandez & Family



Ashly Melgoza & Family



Alex Murphree & Family



Jacob Lytle

I would like to personally thank each and everyone of these team members for their contribution to our successful operation. They are all appreciated and valued coworkers.
John Sutphin III

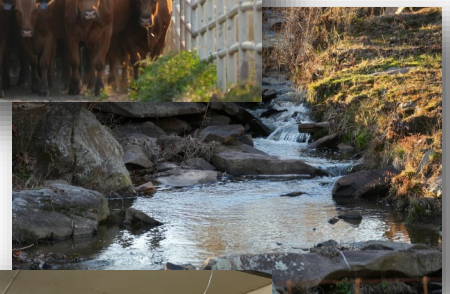
SUTPHIN RANCH



Mark Weddle & great grand son on Winrock Lane



Dakota, Mark & Leslie Winrock gathering



Jim Austin breaking colt



Jaden & Dakota freeze branding



Leslie Austin tagging Lot 1136 cow 016



Leslie explaining "the birds & the bees" Jim showing off his passion for photography & cattle.

Longevity... 1/5/2024 John is pictured above on the Oklahoma Ranch with several 2008-2010 model cows (14-16yrs old) that are still producing top calves.



SUTPHIN
cattle COMPANY



John & Angela's parents