



SUTPHIN

cattle COMPANY

**Three Creek Livestock Auction @
Friday May 1st, 2026 @ 11AM**

1908 Old Hwy 70, Hugo, OK

www.sutphincattle.com

Angela Sutphin 719-691-9061

welcome

We are excited to present a selection of robust, age-advanced coming 2-year-old virgin bulls. We take great pride in this offering and are confident that you will be impressed by the quality and variety of multi-breed bulls available for you today. Our program is dedicated to providing superi-

or genetics to the commercial cattleman. We aim to produce cattle that perform not only for us, but for cow-calf operators, feedlots, packers, and consumers alike. This is achieved through the use of proven carcass genetics from across the country, with a focus on combining low birth weights with high weaning and yearling weights, while also maintaining excellent grass-converting, maternal traits.

Our goal is to be a trusted source of reliable, high-quality multi-breed bulls for regions such as Arkansas, Kansas, Georgia, Texas, Oklahoma, Missouri, New Mexico, Wyoming, Arizona, Tennessee, Alabama, Louisiana, Mississippi and Florida, both in the fall and spring. Over time, we have gradually expanded our cow herd and Cooperator Program, increasing our annual bull numbers to 1,200. We are proud to be the 7th largest bull supplier in the United States. Building long-term relationships is important to us, and we are deeply grateful for the friendships and connections we've made. We look forward to seeing you on sale day and discussing how we can contribute to your success.

The Sutphin's
8825 US Hwy 50
Lamar, CO 81052



Kadyn, Jozlyn & Kross Hicks



John III & Angela



McKenzie, Krew & Kolby Stegman



*Caleb, Chanelle, Tilden,
Slade & Sawyer DuVall*



*John IV, Jessica, Annistyn,
Blakelynn & John V Sutphin*

Rugged, Range Ready Feed Program:

The bulls are never pushed hard on grain & they are grown on a high roughage diet when on feed test. The yearlings are summered out on grass & then wheat in the fall & spring if available. Our yearlings & weaning weights are real world weights because calves are grown on pasture & high forage diet. * **The Red marks indicate that the data is in the Top 20% of their contemporary group.**

Bull Selection:

In order to assist you in selecting the bull that is right for your program we have designated a rating for each of our bulls. By rating our bulls, it gives you a better idea of what you are getting. If it's a heifer bull you are looking for, we want to get you a true heifer bull. If you're looking for a cow bull that will put pounds on your herd, we can get you that! When selecting each rating we take into consideration, several factors. We look at the individual bull; the genetics behind him; his EPDs given by the Breed Association; and his actual weights. To the right is an explanation of the ratings along with a docility rating:

Docility Rating	<u>Rating</u>
Grandma Gentle	5
Grandpa Gentle	4.5
Sorts & Works Easily	4
Manageable	3.5
Nervous but Manageable	3

Calving Ease	<u>Rating</u>
Guaranteed Heifer Bull <u>Sleep Easy</u>	5
Heifer Bull meeting most criteria	4
Moderate BW w/ Moderate EPDs	3
Heavier BW w/ Growth EPDs	2
Recommended Cow Bull Only	1



The Story Behind The Sutphin Bull Guarantee

Our first bull sale was thirty-two years ago—eight head, averaging \$1,200. At the time, I thought I was rich.

One of those early customers was Lowell Johnston of La Junta, Colorado. Before our second annual sale, Lowell stopped by to look at bulls. Through the grapevine, I had heard that a bull he purchased the year before might have been injured. Wanting to do the right thing, I quietly slipped into the Winter Livestock office and arranged a credit for him—without saying a word.

Later that day, Lowell found out about the credit and came to me, clearly unsettled.

“No sir, young man,” he said. “I don’t deserve that. The bull wasn’t hurt. He stayed in the corral for about sixty days, went back out with the herd, and he’s been just fine.”

The next day, Lowell returned with his brother and his son, Kent Johnston. Together, the Johnston family purchased several bulls—and in many ways, made that second sale a success.

That moment stuck with me.

In memory of Lowell Johnston, the Sutphin Bull Guarantee was created. His honesty, integrity, and the lesson he taught me about taking care of people—and doing what’s right—continue to guide how we do business today.

Our Details

Return

Bulls must be returned to our McClave, CO bull pavilion after contacting us with pictures or get verified to qualify for insurance.

Coverage Details

Bulls over \$5,000 purchase price are a no questions asked guarantee for a 120-day breeding season. The replacement covers everything but foot rot (you must doctor your foot rot).

Coverage Window

Insurance is paid through September 1, 2026. Additional insurance - 100% through Sept. 1 then 10% of the bull through February 1, 2027.

Contact

You must contact Angela Sutphin (719-691-9061) with pictures and/or vet verified to qualify for insurance. Bull credit minus salvage value will be granted for next year's sale.



RED ANGUS

Lot	Bull Name	Sire	DOB	Rating	BW	WW	YW	current	WW/DA	WDA
%	Sire of Dam or Dam Reg.		Reg.	CED	Bwepd	Wwepd	Ywepd	Mkepd	SCR	DOC
3	Sutphin's Santana 1443	Nio Santana 8019	8/26/2024	3	86	630	889	1220	2.83	2.47
	Cat 3	TC 3 Aces Hamley 2605	5064957	1	1.2	59	84	19	36	3

A moderate framed Santana son with a big top, long body & high weaning weight.

20	Sutphin's Santana 1302	Nio Santana 8019	9/10/2024	4	57	539	990	1240	2.40	2.56
	Cat3 HB	Mushrush Impress LN U217	5064971	14	-1.6	57	89	17	36	2.5

A Santana son that is moderate in his build and over all well balanced. High calving ease.

26	Sutphin's Santana 2	Nio Santana 8019	9/25/2024	3	85	500	970	1200	2.20	2.55
	Cat 3	Mushrush Impress LN U217	5200347	6	1.9	58	86	16	36	5

A cherry red, moderate framed bull with docility to spare. Eye

27	Sutphin's Trump 3952	Blair's Trump 321F	11/18/2024	4	60	580	975	1250	2.54	3.00
	Cat 3 LBW	Sutphin's Objective Angus	5213327	13	-1.5	53	79	23	39	5

A Trump son with high capacity that is built solid & strong for the ranch world. Very docile & large scrotal.



Nio Santana 8019 (3969168)
 Is a bull that dominated the competition & is put together in a perfect fashion.
CED 11 BW -0.6 WW 52 YW 74 M 16



**5L Out In Front 1701-457B Sire of
 5L Out in Front 5084-60D (3565084)
 CED 8 BW -2.0 WW 67 YW 100 M 18**

Lot	Bull Name	Sire	DOB	Rating	BW	WW	YW	current	WW/DA	WDA
%	Sire of Dam or Dam Reg.		Reg.	CED	Bwepd	Wwepd	Ywepd	Mkepd	SCR	DOC
85	Sutphin's Out N Front 8079	Sutphin's Out N Front 3188	9/18/2023	3	85	656	940	1580	3.20	2.44
	Cat 3	LRW Ribeye 4389B	5030239	9	1.3	71	111	22	35	3.5

A bull with an expressive hip & smooth made. High YW & WW Epds. Top 11% ME Epd. He will sire market topping feeder calves.

121	Sutphin's Deniro 98424	Leachman Deniro A090x	3/20/2024	4	71	501	950	1290	2.20	2.35
	Cat 3 HB	Mushrush Impressive LN U217	5146491	15	-3.9	56	87	28	34	5

A coming 2 yr old bull with a moderate frame, sound feet, wide chested & high Milk Epds. A female maker.

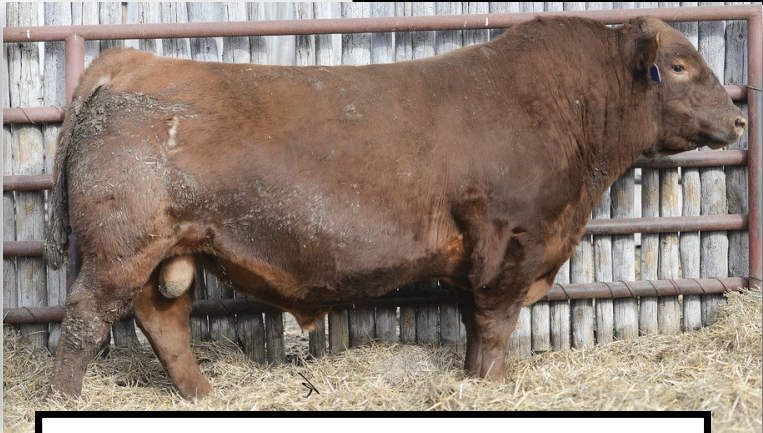
152	Sutphin's Out N Front 8198	Sutphin's Out N Front 3188	5/7/2024	4	64	531	890	1310	2.35	2.29
	Cat 3 LBW	Red JCC Advance 33A	5152601	12	-1.9	57	92	21	36	4.5

A Out N Front son with low actual BW, High WW & YW Epds.

RED ANGUS SIRES



**Red Cockburn Ribeye grand sire of
Red JCC Advance 33A (1753278)**
Will add depth of rib & weight to your calves.
CED 13 BW -0.8 WW 39 YW 51 M 15



Bieber Oly Z260 (1522535)
sire to Sutphin's Oly 297Z (3953807) 1B
Oly stamps his calves with a deep rib, heavy muscle,
large scrotal & a moderate frame.
CED 14 BW -3.7 WW 50 YW 88 M 25



Andras Fusion R236 (1506931)
Proven calving ease option in the ABS lineup. He is a
wide bodied, deep ribbed & heavy muscled bull.
CED 15 BW -2.8 WW 53 YW 93 M 24



**9 Mile Franchise 6305 Brother to
C-Bar Franchise 8135F (4045174)**
Impressive phenotype with low BW & high CED.
CED 15 BW -4.0 WW 64 YW 102 M 24



Leachman Deniro A090x (1371233)
Sire to Sutphin Deniro 196W & 108z
Expressive muscle, deep rib & proven heifer maker.
CED 18 BW -5.1 WW 52 YW 80 M 29



Sire of Mushrush Impressive LN U217 (1295151)
One of the top bulls of the 2010 Mushrush Sale.
He is a calving ease deluxe bull.
CED 16 BW -2.9 WW 69 YW 115 M 16

ANGUS



SAV President 6847 (18578964)

Was the world record and top-selling bull of the 2017 SAV sale. Valuation of \$938,500. Son of Coleman Charlo 0256.

CED 3 BW 3.4 WW 73 YW 122 M 23



Evenson Southern Charm 086 sire of FAR Southern Charm 2273 (20477738)

Will add frame, bone, length & capacity to his calf crop. An absolute powerhouse.

CED 0 BW 2.6 WW 77 YW 128 M 21



SAV 654x Rainmaster 6849 (AAA-18578966)

Combines fresh genetics, wide bodied & attractive patterned with an exceptional power, phenotype & data combination.

CED 4 BW 2.2 WW 70 YW 119 M 23

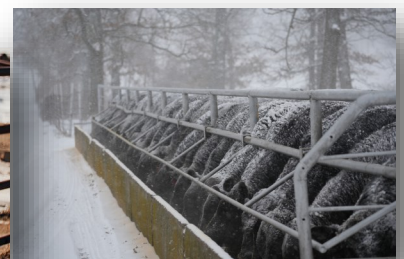


SAV Raindance sire of

KLA Red River 064 (AAA-19716589)

Extra long, deep-bodied & stout-rumped with all the power & performance put in one package.

CED 15 BW -0.7 WW 57 YW 113 M 32



ANGUS

Lot	Bull Name	Sire	DOB	Rating	BW	WW	YW	current	WW/DA	WDA
	%	Sire of Dam or Dam Reg.	Reg.	CED	Bwepd	Wwepd	Ywepd	Mkepd	SCR	DOC
309	Sutphin's Proclamation 326	Apex Proclamation	9/17/2024	3.5	70	548	925	1161	2.45	2.48
	7/8 SM 1/8 AN AI	Schurrtop E626 J993	Est Epds	7	2	66	104	25	35	4
An AI son of Apex Proclamation who combines capacity & thickness in a well balanced package. He will produce high-performing calves.										
600	Sutphin's Razors Edge 8510	KLA Razors Edge 095	5/2/2024	5	75	650	951	1450	3.00	2.45
	HBD	Schurrtop 801 L494	21465562	11	-1.5	40	74	26	38	5
A Razors Edge son that has a rare combination of calving ease matched with eye appeal & maternal power. Small knot under jaw.										
649	Sutphin's Bismark 1880	Sutphin's Bismark 2102	10/6/2024	4	74	576	1001	1390	2.50	3.03
	Reg Pending LBW	B/C Legacy 6027	Est Epds	7	1.2	51	88	22	34	4
A Bismark son with added volume, low actual BW & calving ease.										
667	Sutphin's Acres 8615	KLA Angus Acres 8185	4/6/2024	4	70	500	890	1400	2.00	2.17
	HB	Schurrtop 801 L494	21493004	7	0.9	51	90	22	36	5
A Angus Acres son with calving ease, low actual BW, straight topped & docility to spare.										
678	Sutphin's Edge 8596	KLA Razors Edge 095	11/10/2024	4	75	560	1002	1290	2.50	3.05
	Heifer Bull	Sutphin's Bismark 145	21476287	9	-0.2	54	96	28	39.5	4
A Razors Edge son with high calving ease tons of growth & high Milk Epd.										



A.I.ed to Apex Proclamation DG949J (4075468)
 A powerful, balanced sire that can make high performing calves.
CED 12 BW 1.1 WW 90 YW 138 M 27

SAV Bismarck 5682 (AAA-15109865)
 One of the top sires in the Angus Association.
CED 12 BW 0 WW 53 YW 88 M 20



SAV Angus Acres 3205 sire of KLA Angus Acres 8185 & Penz Angus Acres 6571
 Acres is proving up to be a light BW type sire with tremendous growth & eye appeal.
CED 2 BW 2.4 WW 49 YW 90 M 22

SUTPHIN FAMILY



CHAROLAIS

Lot	Bull Name	Sire	DOB	Rating	BW	WW	YW	current	WW/DA	WDA
	%	Sire of Dam or Dam Reg.	Reg.	CED	Bwepd	Wwepd	Ywepd	Mkep	SCR	DOC
700	Sutphin's New Standard 494	Schurrtop W 842 A424 P	10/14/2024	3	80	580	920	930	2.50	2.44
	28/32	TR MR Diablo 2627Z	RM103138	10.8	-1.5	42	83	20		4

A New Standard son with growth & high Milk Epds.

703	Sutphin's Ledger 091	DCF Gold Ledger 514C P ET	11/1/2024	3.5	85	578	970	975	2.58	2.69
	Range Fire 24/32	Schurrtop JK K400 821J P	RM1031241	16.2	-2.1	43	74	18		4

A Ledger son with calving ease & style to burn.



A.I. ED to Lt Ledger 0332 P (M791626)

Ledger is being widely used across the country.

CED 7.5 BW -0.9 WW 33 YW 71 M 3



HPF SHF Renewal 755 (EM908354)

sire of **RBM H Renewal D457 (EM976128)**

An expressive hindquarter that will add muscle to his calf crop.

CED 12.4 BW -0.4 WW 69 YW 124 M 27



LT Bluegrass 4017P (M686569)

Grandsire to Sandcrek Blueprint 114 (M850409)

Bluegrass has become a household name the world over for calving ease, fleshing ability, breed average growth & carcass merit.

CED 6.1 BW -0.8 WW 57 YW 115 M 26



Lock N Load 243P (M836295)

His outstanding numbers are impressive.

He ranks top in several Epds rankings.

CED 7.6 BW 0.4 WW 75 YW 141 M 21

CHAROLAIS

Lot	Bull Name	Sire	DOB	Rating	BW	WW	YW	current	WW/DA	WDA
	%	Sire of Dam or Dam Reg.	Reg.	CED	Bwepd	Wwepd	Ywepd	Mkepd	SCR	DOC
872	Sutphin's Choice 995	Schurrtop M K717 9696 P	3/27/2024	5	74	700	1015	1460	2.69	2.33
	32/32 LBW	DCF Gold Ledger 514C ET	M1017235	16.4	-3.1	57	107	17	41	4
A Schurrtop that is a stud with incredible length, big hip & will sire a great set of calves. Red marks across the board! Top 10% CED & MCE.										
887	Sutphin's Charm 0108	Schurrtop R 709J 228NP	4/16/2024	4	70	580	980	1259	2.32	2.08
	24/32 Range Fire	Schurrtop 5152 M637 P	RM103152	13.8	-2.2	56	101	12	34	5
A Moderate framed, easy fleshing, calving ease Schurrtop son with high YW Epds. Very docile.										
889	Sutphin's Rose Midwest 0128	Schurrtop 2828 M683 P	4/10/2024	3.5	80	520	900	1230	2.11	2.23
	24/32	Schurrtop M 2569 9096 P	RM103178	12.5	-3.4	45	87	13	36	4
A Midwest son with calving ease & low BW Epds.										
904	Sutphin's Rose Renewal 859	RBM H Renewal K457	8/28/2024	3	95	591	962	1500	2.64	3.02
	28/32	DCF Gold Ledger 514C P ET	RM103180	10.9	0.1	63	108	24	32	4
A stand-out in the pen that is built solid & strong for the ranch world. He will add pounds & profit to his calf crop. High WW, YW & Milk Epds.										
905	Sutphin's Rose Midwest 1228	Schurrtop 2828 M683 P	10/3/2024	3	89	565	1001	1380	2.67	3.00
	32/32	DCF Gold Ledger 514C ET	M1018235	12.7	-1	60	102	20	36	4
A herd bull in the making with massive muscle, added bone, powerfully constructed package & growth numbers.										
922	Sutphin's Renewal 0116	RBM H Renewal K457	9/6/2024	3	80	550	1000	1550	2.53	3.18
	32/32	Schurrtop 253 M778 P	M1018233	13.2	-0.8	61	109	24	36	4
A Renewal son that has excellent muscle shape, thickness & stoutness in a powerfully-constructed package. High WW, YW & Milk Eps.										

SIM ANGUS

Sim Angus Bulls

Sutphin Cattle has built a Sim Angus bull, approx. 1/4 to 3/8 blood, that calves moderate & is not too big for our country.

These bulls will influence a Black Angus herds weaning weight by 40 lbs. plus.

These bulls have a wide top, huge hindquarter & the calves will push the scales down at weaning time and will top the market.

John Sutphin



SIM ANGUS

Lot	Bull Name	Sire	DOB	Rating	BW	WW	YW	current	WW/DA	WDA
	%	Sire of Dam or Dam Reg.	Reg.	CED	Bwepd	Wwepd	Ywepd	Mkepd	SCR	DOC
1452	Sutphin's Optimo 8824	Mr Ishee Optimo 909	8/11/2024	3	83	620	1107	1500	2.80	2.92
	3/8sm 3/8an 1/4lm	PS Objective Design 2306	4645932	7.1	2.6	69	104	20	39	5
An Optimo son with a stout-rump, performance, high docility, massive dimension & center body mass.										
1314	Sutphin's Bold Man 251	MR Ishee Bold Man	10/20/2024	3	80	690	1100	2000	3.00	3.90
	1/2 SM 1/2 AR	Impressive	4669905	7	2.5	67	102	24	42	4
A Bold Man son with high weaning & yearling weights. Large scrotal.										
1374	Sutphin's Impress 748	Ishe Bold 936	3/30/2024	3	82	730	1000	1400	2.50	2.60
	3/8sm 3/8an 1/4lm	Sutphin's Business	4584413	7.7	1.9	68	106	22	32	4
A Impressive son with a huge middle, & expressive hindquarters. High growth numbers.										
1468	Sutphin's Genesis 024	HZN Genesis K112	10/1/2024	3	65	539	972	1320	2.39	2.85
	3/8sm 3/8an 1/4ar	B/C Thunderstruck 7174E	4669903	9	0.8	80	120	21	36.5	4
A Genesis son with low actual BW & high growth.										
1480	Sutphin's Oracle 3201	B/C Oracle 8007F	11/18/2024	3	65	680	1020	1305	3.00	3.14
	1/4SM 5/8AN 1/8LM	Sutphin's Bismark	4669904	8	1.3	65	99	19	36	3
Oracle son with that is powerful from front to back.										
1486	Sutphin's Raptor 780	Penz Raptor 9554	7/30/2024	2.5	89	670	1107	1820	2.91	3.35
	3/4 an 1/4 lm	Sutphin's Bismark 145	Est Epds	2	3	56	99	22	33	3
A Penz Raptor son with high weaning & yearling weights.										



Sire of B/C Thunderstruck 7174E (3367336)
 Thunderstruck is unique in the combination of his thickness & muscle shame in a smooth package.
CED 11 BW 2.2 WW 66 YW 101 M 21

LBRS Genesis G69
 sire of HZN MR Genesis K112 (4144929) 1/2SM
 He offers complete, fault-free genetics for growth, maternal & carcass.
CED 10 BW 1.7 WW 100 YW 157 M 27

SUTPHIN CATTLE CREW



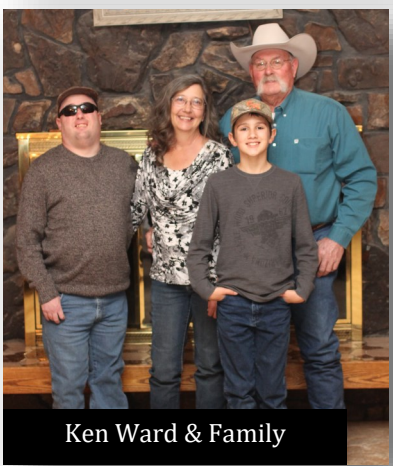
Jim Austin



Mark & Kellie Weddle



Ashly Melgoza & Family



Ken Ward & Family



**Efrain Chavez & Son
(Hay Yard Manager)**



Abraham Hernandez & Family



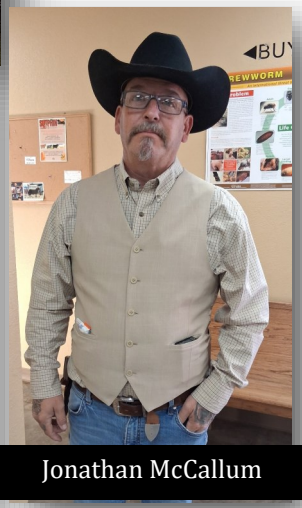
I would like to personally thank each and everyone of these team members for their contribution to our successful operation. They are all appreciated and valued coworkers.
Angela Sutphin



Alex Murphree & Family



Jeri Lynn Fowler & Family



Jonathan McCallum

